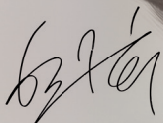


# **Shark** **FlexStyle™**

2 in 1 Hair Dryer & Styler

**Less Frizz and  
No Heat Damage\***

*\*See back page for details*



**Han So-Hee**

*South Korea Actress*

*Shark FlexStyle Ambassador*





**Shark**  
BEAUTY.

Get Ready to Shine

Style while you dry, with no heat damage. With just a twist, Shark FlexStyle™ transforms between a powerful, fast, hair dryer, and an ultra-versatile multi-styler. Lightweight & powerful, it's the ultimate answer to fast, easy styling.



POSITIVELY IMPACTING PEOPLES' LIVES EVERY DAY IN EVERY HOME AROUND THE WORLD

# **Shark** **FlexStyle™**

2 in 1 Hair Dryer & Styler

**Get ready to shine**

Up To 71% More Shine\*\*

Less Frizz and  
No Heat Damage\*



**Han So-Hee**

South Korea Actress

Shark FlexStyle Ambassador



\* See back page for details

Fast drying

## No heat damage.

It may be compact, but Shark FlexStyle™ gives you power and speed for fast performance. As you dry, it measures temperatures 1,000 times per second, ensuring consistent air temperatures and no heat damage\*.

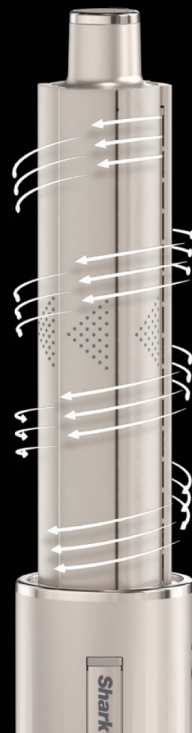


Fight frizz and smooth flyaways

FrizzFighter™ Finishing Tool

Style & dry at the same time.

Styling Concentrator

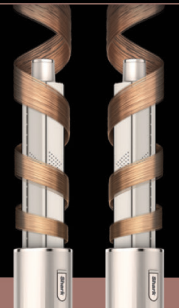


Coanda Technology

Wraps. Curls. Sets.

## Easily.

Watch the magic happen when you place your hair near the curlers. Easy wrapping, setting, and curling, for luscious looks.



Hassle-free curls in seconds.

Easy-Wrap Curlers

Straighten & smooth all at once.

Paddle Brush



Smooth & defrizz.  
Add volume & bounce.

Round Brush



# Shark FlexStyle™

## 2 in 1 Hair Dryer & Styler

Style while you dry. This 2-in-1 is a powerful hair dryer and versatile styling wand

With just a twist, you can use it as a quick-drying hair dryer that is gentle on your hair, or as a styler that gives your hair a glossy finish and sets your style. With just one device, you can easily use a variety of functions.



### Cool Shot Button

Press and hold the Cool Shot button as desired to seal the hair cuticle and lock in your styles



### Airflow

Low / Medium / High



### Temperature

No heat / Low / Medium / High



### Power

On / Off



### Styler Lock

Slide lock down to unlock the styler so it can be removed



### Hinge Latch

Slide latch down and rotate the nozzle lift to switch to the hair dryer mode

## FrizzFighter™ Finishing Tool



### Styling tip:

- Adjust the heat according to your hair type
- Works best on straight or straightened hair

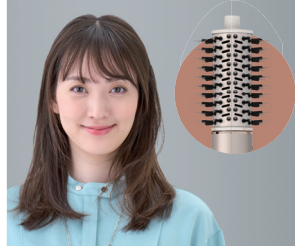


### Recommended Setting:

- Air ● ● ●
- Temp ● ● ●



## Round Brush



### Styling tips:

- For short hair, try reducing the airflow to help cut down on frizz and flyaways
- For thick hair, try increasing the heat for even faster results
- For curly hair, try increasing the heat to help achieve a straighter style
- For added curl, place the brush under the end of the hair and roll the brush toward the roots to engage the bristles. Twist the hair off the brush to release the curl.

### Recommended Setting:

- Air ● ● ●
- Temp ● ● ●



1



Begin with completely dry hair that has been styled with a concentrator or style brush.

2



Start at the top of your head, close to the roots. Hold until the hair attracts

3



Slowly slide the FrizzFighter™ Finishing Tool down the length of your hair. Gently touch your hair with the tool - no need to press it against your head

4



Repeat around your head

1



Begin with rough-dried or towel-dried hair.

2



Section your hair as desired. For voluminous blowouts, start by placing the brush under the hair close to the roots.

3



Roll the brush outward from the roots to the ends to engage the bristles and gently grip the hair.

4



Repeat on remaining sections until hair has been dried into a bouncy, voluminous style.

## Paddle Brush



### Styling Tips:

- For fine hair, try reducing the airflow to help cut down on frizz
- For thick hair, try brushing smaller sections for the smoother results
- For curly hair, try repeatedly brushing smaller section and increasing the heat to help achieve a straighter style
- For added volume, place the brush under hair section close to the roots and brush upward using a round motion

### Recommended Setting:

- Air ● ● ●  
 Temp ● ● ●



1



Begin with rough-dried or towel-dried hair.

2



For a smooth, sleek style, start by placing the brush close to the roots to engage the de-tangling bristles

3



Brush down you hair, making sure to engage the smooth bristles, and gently grip the hair.

4



Repeat on remaining sections until hair has been dried into a smooth straight style.

## Styling Concentrator



### Styling tips:

- For thinner, finer hair, try reducing the airflow to help cut down on frizz
- For added volume, place a round brush under the roots and brush upward while drying with the concentrator
- For and added curl, roll the ends of your hair onto a round brush and dry in place using the concentrator

### Recommended Setting:

- Air ● ● ●  
 Temp ● ● ●

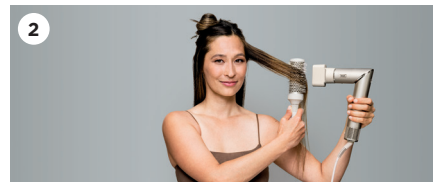


1



Begin with rough-dried or towel-dried hair.

2



Section your hair as desired and start styling with a round brush. Rotate the concentrator so airflow is always in line with the round brush

3



Apply heat in a downward motion for smoothing.

4



Finish styling by setting shape at ends and pressing the Cool Shot Button

## Easy - Wrap Curlers



### Styling Tip:

- Use sectioning clip to prevent unwanted hair from being wrapped around the barrel
- Test different moisture levels to understand the level of moisture that works best for your hair type
- For curly hair, prep your hair for curling by lengthening it using the paddle brush or oval brush

### Recommended Setting:

- ☑ Air ● ● ●
- Temp ● ● ●



1



Begin with slightly damp hair. Separate the top and bottom sections of your hair.

2



Take a hair strand that is about 2 centimetres wide and lift it by pinching it about 10 centimetres from the tip.

3



Turn on the styling wand. Bring the barrel behind the dangling hair. The hair ends will automatically wrap around the barrel - no need to manually wrap.

4



Once the ends wrap, let go of the hair section and slowly bring the barrel directly to the roots, allowing the hair to continue to wrap itself around the barrel. No need to twist the wand.

5



For best results and avoid heat damage, hold the barrel in place for 10 seconds, the press and hold the Cool Shot Button for at least 10 seconds. Repeat as needed until hair is dry. Turn off the styling wand and pull the barrel straight down to reveal your curl.

6



# Shark FlexStyle



**Model Number**

HD440SLSM

HD440SM

**UPC code**

622356268424

622356267670

**Colour**

Stone

Black

**Accessories colour**

Beige

Black

**Product Size** (WxLxD)

4.5cm x 28cm x 4.5cm

**Product weight** (Hair dryer only, no accessories attached)

700g

**Power consumption**

1400w

**Accessories included**

FrizzFighter Finishing Tool

Round Brush

Paddle Brush

Styling Concentrator

Easy - Wrap Curlers



## CUSTOMER SERVICE



MY: 1800 803 915

SG: 800 120 5111



MY: customerservice.my@sharkninja-apac.com

SG: customerservice.sg@sharkninja-apac.com

## AFTER-SALES SUPPORT

- Singapore and Malaysia based customer support
- Replace faulty product in 7 working days\*
- Please register your product warranty on:  
[sharkninja.sg](http://sharkninja.sg) (for Singapore)  
or [sharkninja.my](http://sharkninja.my) (for Malaysia)

\*Product must be within warranty period.  
Subject to availability of parts



MY: sharkhomemy

SG: sharkhomesg

\*\*Testing based on bare machine plus polisher (FrizzFighter) vs air drying

\*Shark FlexStyle measures heat 1,000 times per second ensuring consistent air temperatures and no heat damage

